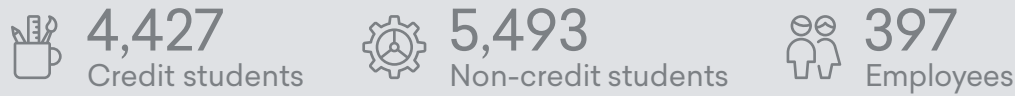




REFLECTS FY 2019-20

The Economic Value of Nash Community College

About NCC



1 out of every **38** jobs in Nash County is supported by the activities of NCC and its students.

ECONOMIC IMPACT ANALYSIS

Alumni impact

Impact of the increased earnings of NCC alumni and the businesses they work for

\$61.9 million
Added income

902
Jobs supported

An economic boost similar to hosting the World Series **10x**

● = 25 jobs
* = family of four

Operations spending impact

Impact of annual payroll and other spending

\$22.3 million
Added income

435
Jobs supported

Enough to buy **665** new cars

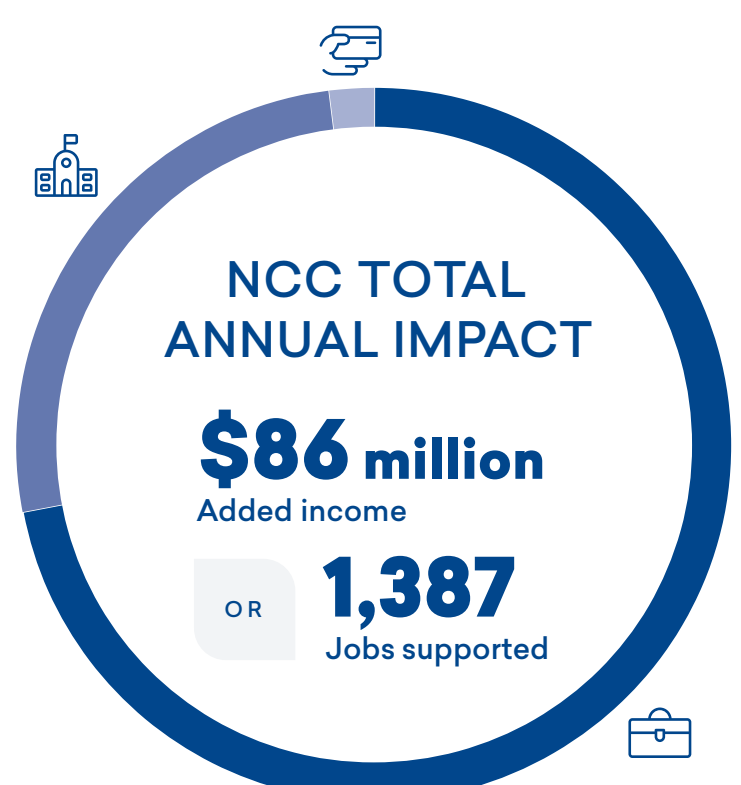
Student spending impact

Impact of the daily spending of NCC students retained in the county

\$1.7 million
Added income

50 Jobs supported

Enough to buy **139** families* a year's worth of groceries



INVESTMENT ANALYSIS

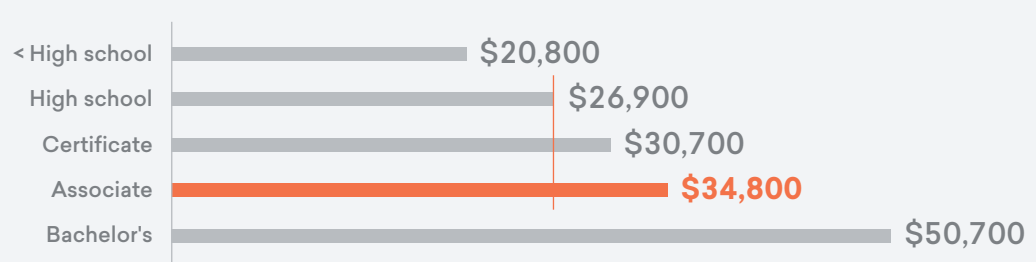
For every \$1...

Students gain **\$3.60** in lifetime earnings

Taxpayers gain **\$1.50** in added tax revenue and public sector savings

Society gains **\$6.00** in added state revenue and social savings

The average associate degree graduate from NCC will see an increase in earnings of **\$7,900** each year compared to someone with a high school diploma or equivalent working in North Carolina.



Sources: Emsi Economic Impact Study; <http://www.chicagotribune.com/news/opinion/commentary/ct-world-series-host-cities-economy-20151103-story.html>; <http://www.usatoday.com/story/money/cars/2015/05/04/new-car-transaction-price-3-kbb-kelley-blue-book/26690191/>; <http://www.usatoday.com/story/news/nation/2013/05/01/grocery-costs-for-family/2104165/>

