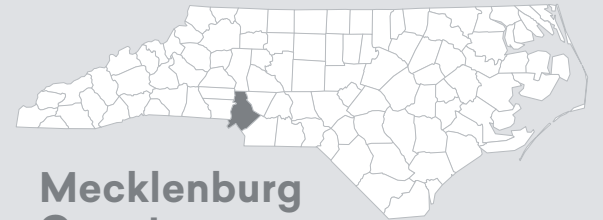


The Economic Value of Central Piedmont Community College



Mecklenburg County
North Carolina

About Central Piedmont



25,752
Credit students



18,011
Non-credit students



2,819
Employees

1 out of every 85 jobs in Mecklenburg County is supported by the activities of Central Piedmont and its students.



● = 250 jobs
* = family of four

ECONOMIC IMPACT ANALYSIS



Alumni impact

Impact of the increased earnings of Central Piedmont alumni and the businesses they work for

\$621.4 million
Added income



An economic boost similar to hosting the World Series
104x

OR

7,235 Jobs supported



Operations spending impact

Impact of annual payroll and other spending

\$139.9 million
Added income



Enough to buy **4,169** new cars

OR

3,022 Jobs supported



Student spending impact

Impact of the daily spending of Central Piedmont students retained in the county

\$30.8 million
Added income



Enough to buy **2,477** families* a year's worth of groceries

OR

588 Jobs supported



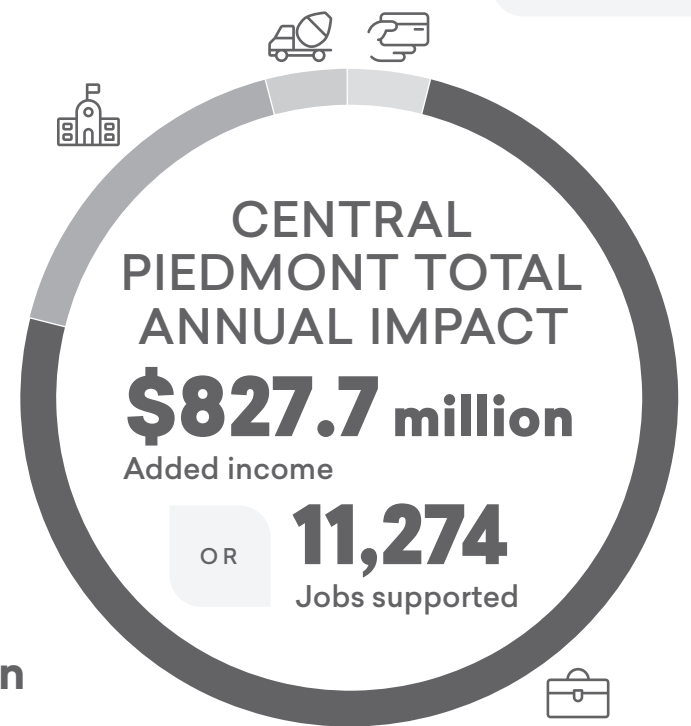
Construction spending impact

Impact of expenditures for ongoing construction projects

\$35.6 million
Added income

OR

429 Jobs supported



INVESTMENT ANALYSIS



For every \$1...



Students gain **\$3.80** in lifetime earnings



Taxpayers gain **\$1.40** in added tax revenue and public sector savings



Society gains **\$6.40** in added state revenue and social savings



The average associate degree graduate from Central Piedmont will see an increase in earnings of **\$10,500** each year compared to someone with a high school diploma or equivalent working in North Carolina.

